

Tree Journaling

Take a walk outside and observe the trees around you.

Choose one big tree, and focus on the bark. Then, bend down and try to find any roots. Next, look at the leaves (needles are leaves too!). Last, try to find any seeds from the tree you chose. Take your time looking at each individual part. Write down your observations and do your best to draw each part of the tree, then think about how each part of the tree is connected.

For an extra activity, search for a broken branch or a tree stump. Try to identify the different layers of a tree, using the last sheet of these instructions as a guide. You can also try and count the tree rings to see how old the tree or branch was.

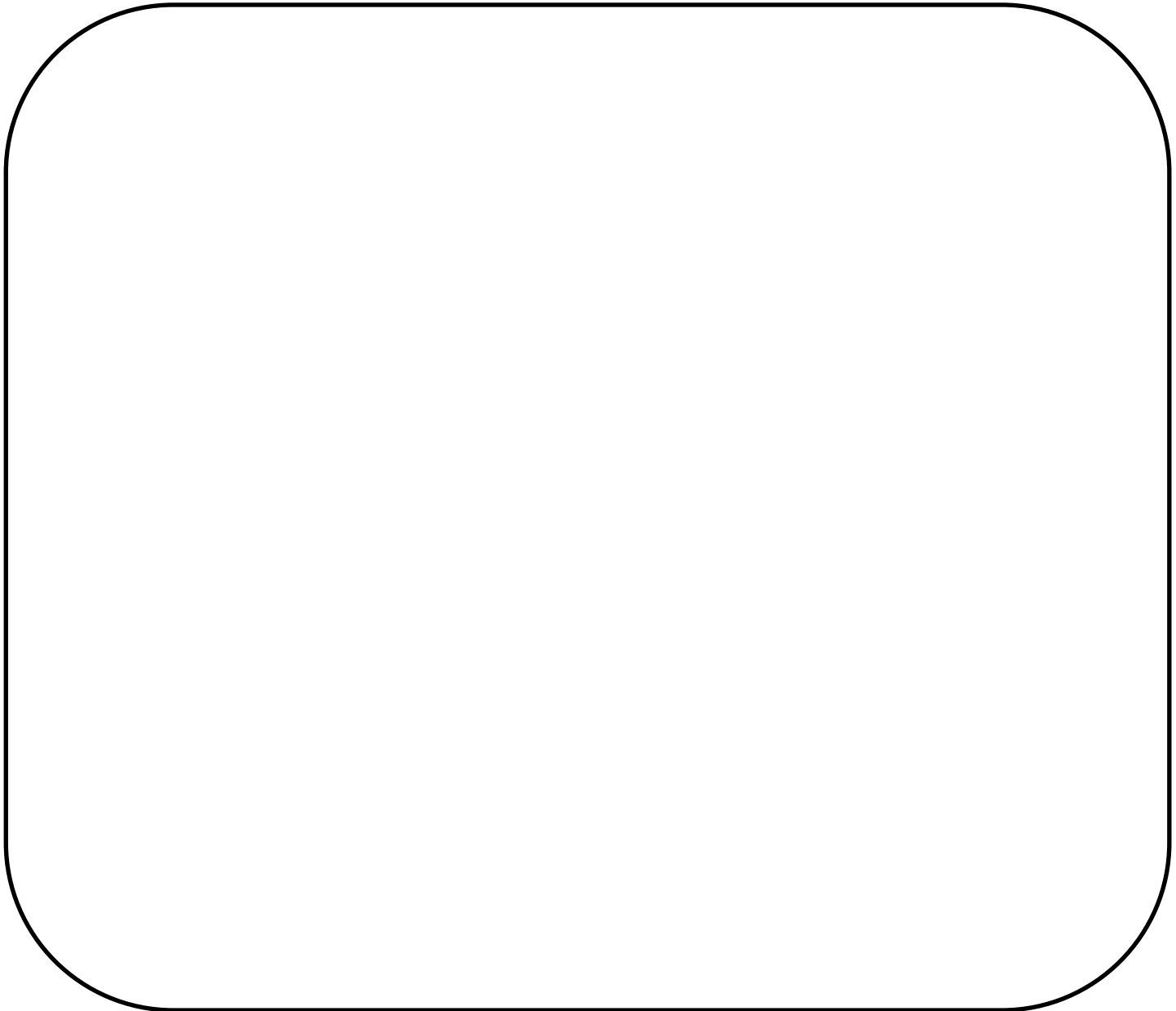
Supplies:

- Pencils, markers, or crayons
- Paper (you can use the sheets at the end of these instructions)
- A hard surface, such as a clipboard or table
- Magnifying glass (if available)



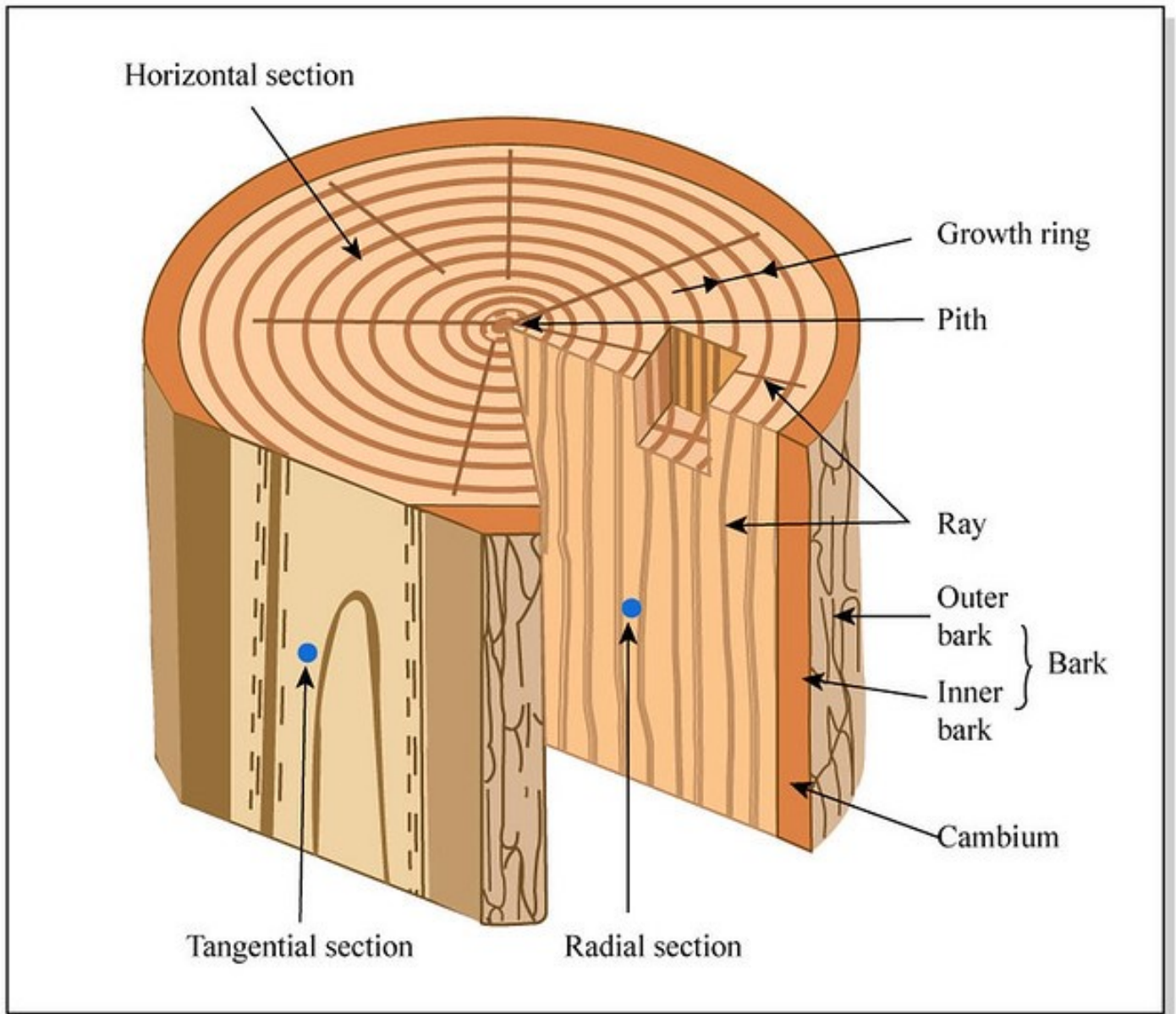
Hoyt
Arboretum
Friends

Tree Journaling



Hoyt
Arboretum
Friends

Layers of a Tree



Hoyt
Arboretum
Friends